

Women's Resource Center  
*of the New River Valley*

# Rapport - Building with LGBTQ+ Victims of Violence

---

Emil J. Morris, WRCNRV Community Outreach Specialist  
*He/him or she/her*



# About Us

- Free, confidential, local and trauma informed services for victim/survivors of partner and sexual violence in the New River Valley
- Crisis shelter, transitional housing
- Emergency & Legal Advocacy
- In person & remote counseling



# About Us

- Hotline is staffed by volunteers and staff; no peer professional referrals are needed for someone to request shelter or counseling.
- Volunteer training & internships
  - Hotline
  - Emergency Advocacy
  - Children's programming
  - Supply drives
- Educational programs and presentations

**WRCNRV  
HOTLINE**



**540**

**639**

**1123**

# “Good faith” Promise

I'm not here to trick you,  
Assume you know nothing  
Assume you know everything,  
Or try to make you feel bad-  
This is for your utility and consideration.  
I'm here in honesty and trust.

slido



**When you think of LGBTQ people, what do you think of?**

① Click **Present with Slido** or install our [Chrome extension](#) to activate this poll while presenting.

slido



**What comes to mind when you hear "domestic violence?"**

① Click **Present with Slido** or install our [Chrome extension](#) to activate this poll while presenting.



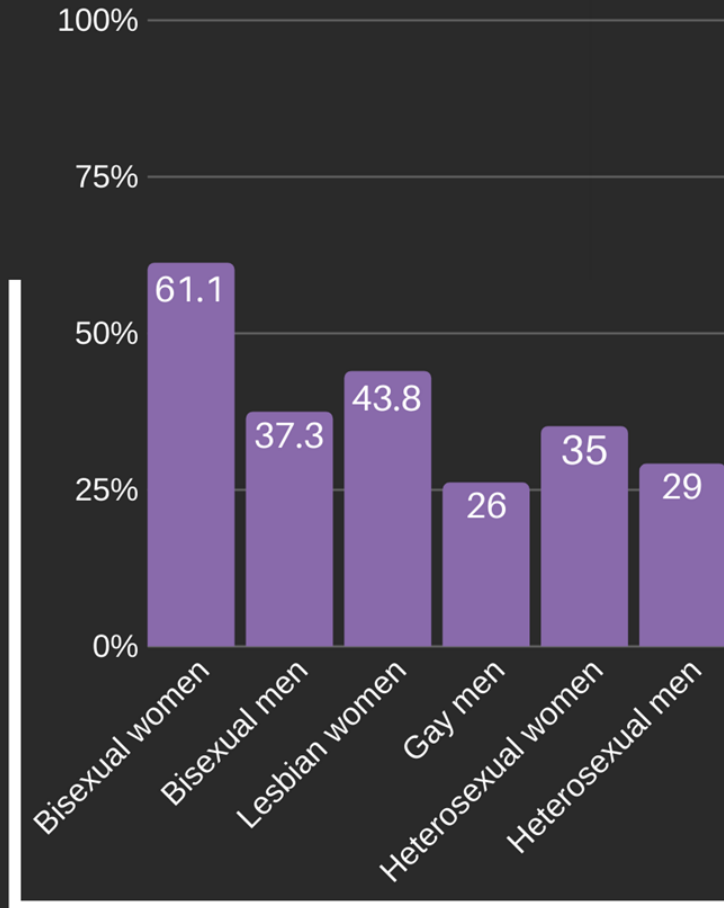
What was something you noticed?

How do you think society looks at violence in lgbtq+ relationships?

Why do you think that is?

## Lifetime Lesbian, Gay, and Bisexual Intimate Partner Violence Prevalence by gender

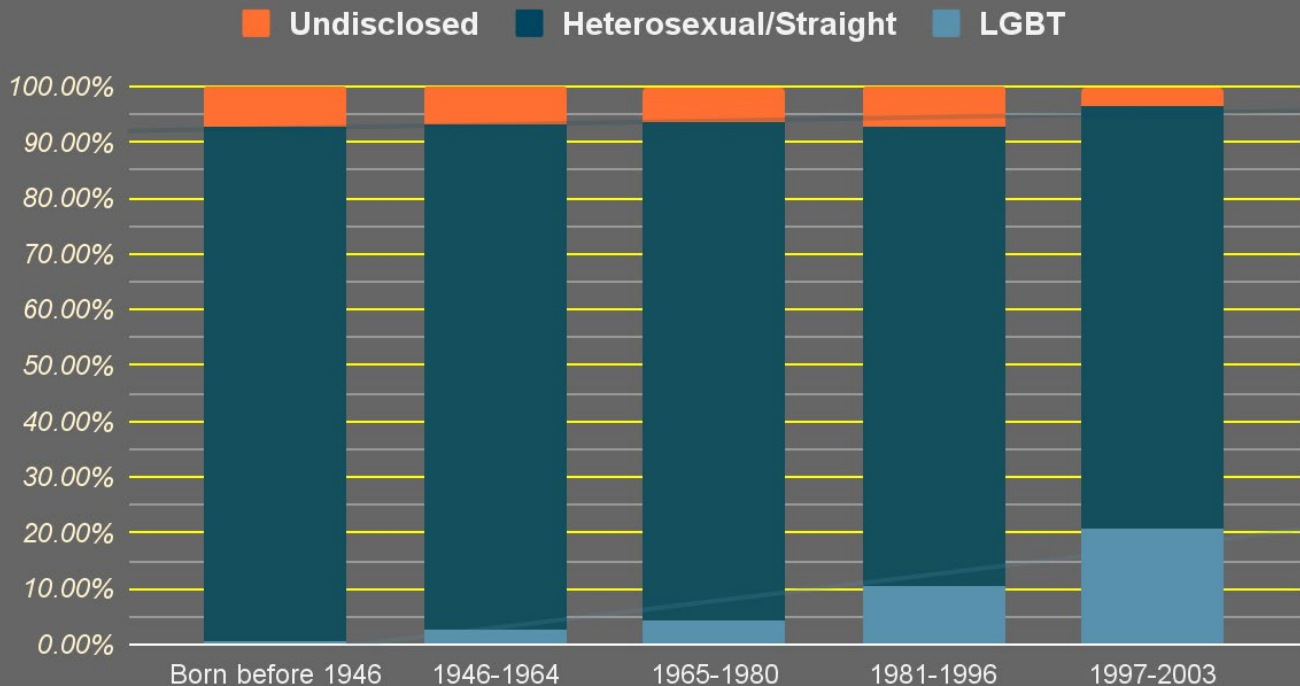
"In 2015, research on LGB IPV constituted a mere 3% of the total research... the phenomenon occurs at a rate that is comparable or even higher than heterosexual IPV."





# LGBTQ Population Estimates

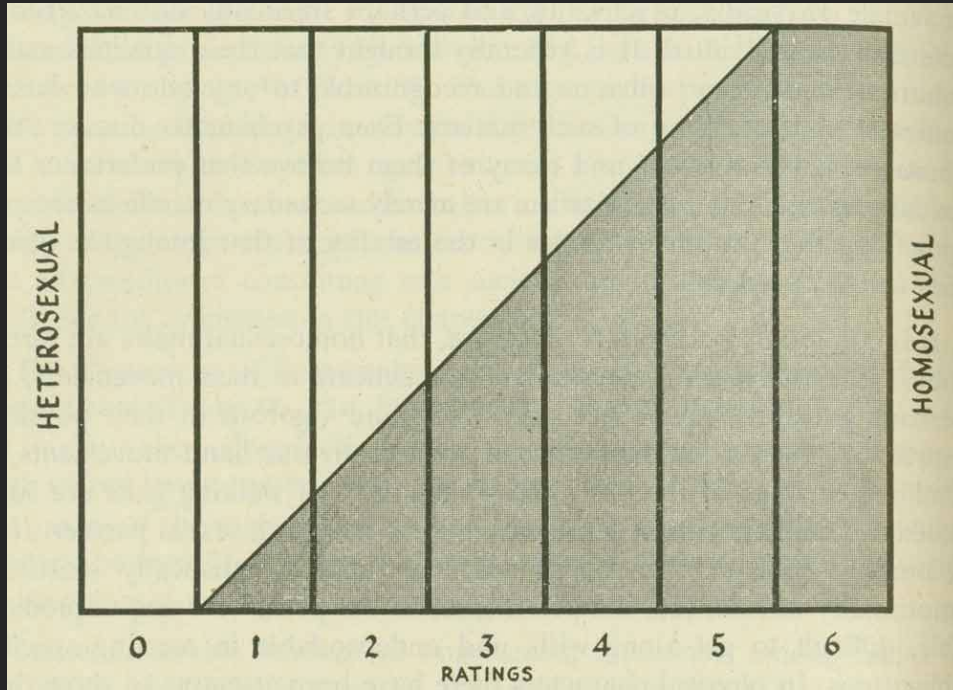
*LGBT Identification by generation*



Data source: Gallup, 2022

<https://news.gallup.com/poll/389792/lgbt-identification-ticks-up.aspx>

# LGBTQ Population Estimates



Alfred Kinsey, sociologist and researcher, published two books on sexual behavior and attraction in males and females in 1948 and 1953 respectively to great renown.

In 11,300 interviews, he found that about **13% of men and 6% of women** reported predominantly or exclusively homosexual behavior and attraction. He estimated **another 18% of individuals** were attracted to their own gender to some lesser degree or to men and women equally. By Kinsey's estimate, about 37% of the population would be not *exclusively* heterosexual.

happy 75th publication anniversary dr. kinsey :)

# LGBTQ+ Terminology

Purple text terms are still common or common in some other form

Gold text refers to older constructs or political forms, but the term is newer - for example, *Achillean* is a masculine equivalent of *Sapphic*.

Much older terminology is still in use, but new terminology is always being invented.



## Late 20th century common terms

MtF/M2F (Male-to-Female)  
FtM/F2M (Female-to-Male)

Transsexual  
Transgenderist  
Transvestite

Genderqueer

Sexual reassignment  
surgery/SRS

Hormone therapy/HRT



## Early 21st century common terms

Trans woman  
Trans man  
A\_AB or D\_AB (assigned or  
designated (sex) at birth)

Trans  
Transgender

Nonbinary/non-binary  
transfeminine  
transmasculine

"Bottom"/"Top surgery"

Hormone therapy/HRT

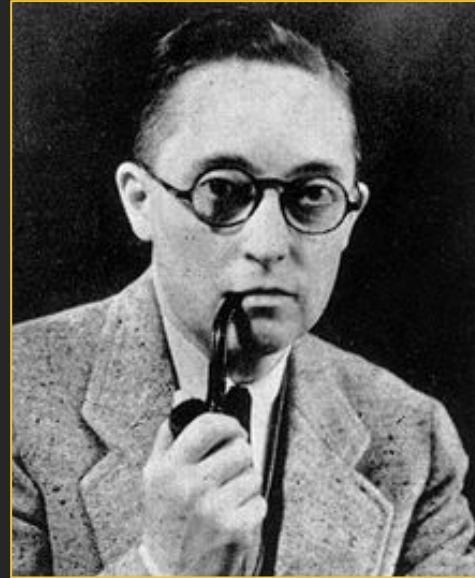
# Absent in plain sight / Hypervisibility

## LGBTQ+ Presence & relationships in history



John Chaffee and Jason Palmer Chamberlain moved out of Boston in 1849, spending the next 50 years in a home they built in California. When Chaffee grew ill at age 80 and was hospitalized, a guest at their cabin wrote of Chamberlain:

*"His meditative, absent look, and day dreams indicate that his mind, thought, anxiety are in Chaffee while he lingers in the East Bay Sanatorium at Oakland. A love could not miss his sweetheart more."* When he received word of Chaffee's passing, he committed suicide.



Dr. Alan Hart (1890-1962), a New York physician and novelist who pioneered the use of x-ray in tuberculosis diagnostics, transitioned in 1920. He stated:

*"For years I had been unhappy. With all the inclinations and desires of the boy I had to restrain myself[...]. I have been happier since I made this change than I ever have in my life, and I will continue this way as long as I live. Very few people can understand..., and I have had some of the biggest insults of my career.... I came home to show my friends that I am ashamed of nothing."*

Hart was repeatedly outed and forced to move from state to state and establishment to establishment when his sex would be published in local papers.

# CHRONIC MINORITY STRESS

## unfair system

- Class & employment discrimination
- Educational discrimination
- Criminalization/police mistreatment
- Healthcare mistreatment
- Social stigma
- Unequal access to institutions

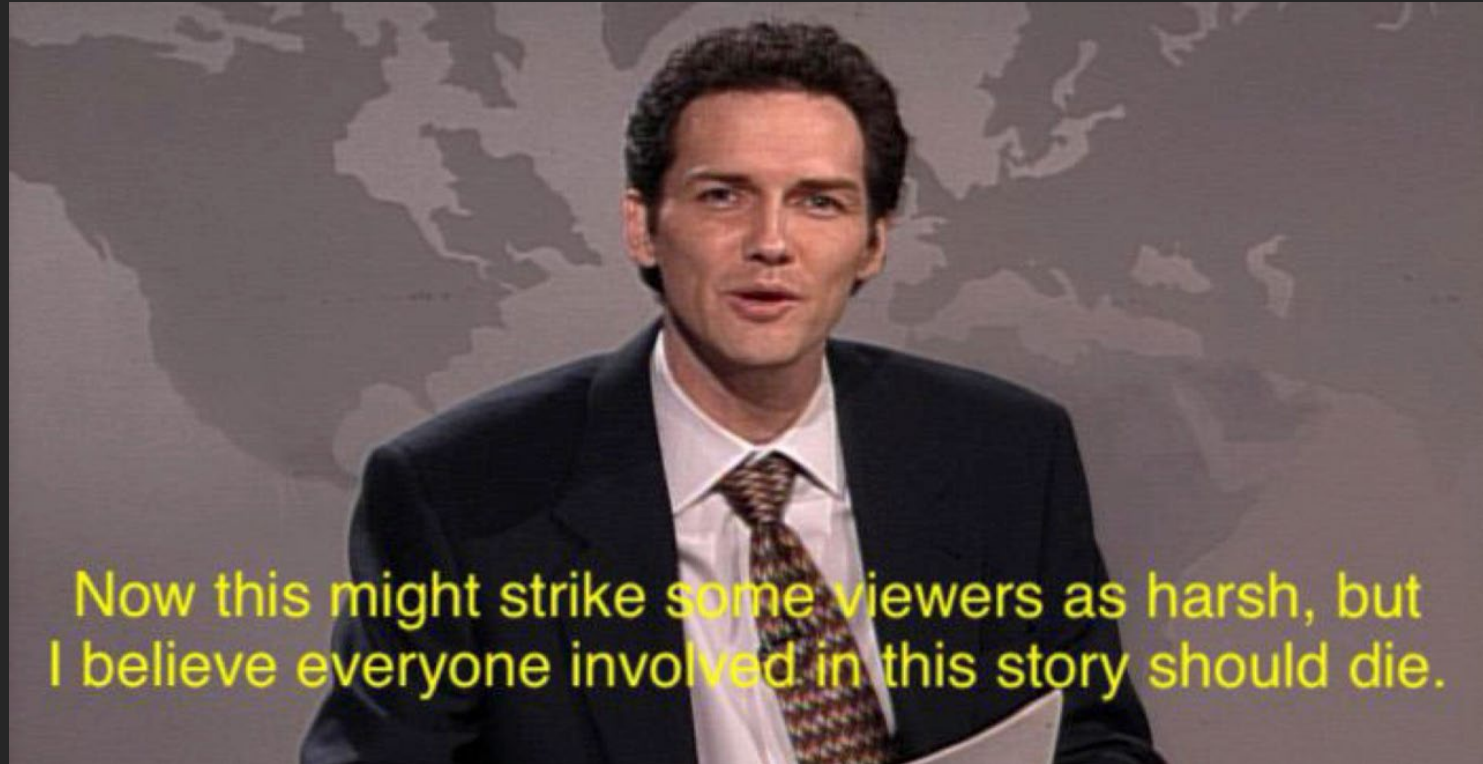
## observed discrimination

- In news, social media, entertainment media
- Legal precedent, historical documentation
- Personal interactions with others
- Influence on past or current experiences of violence

## negative health outcomes

- Raised ACE scores
- Stress-related medical problems
  - Hypertension
  - Depression/Anxiety
  - PTSD
  - Chronic pain
  - Addiction/SUDs
- Direct violence

the air we breathe; the water we swim in



Now this might strike some viewers as harsh, but I believe everyone involved in this story should die.

the air we breathe; the water we swim in



*Norm Macdonald, Saturday Night Live, 1996*



# the air we breathe; the water we swim in

U.S.

## Two Decades After Brandon Teena's Murder, a Look Back at Falls City

Eager to come to terms with his department's tragic mishandling of the rape that led to the murder on New Year's Eve in 1993, a small-town sheriff welcomes LGBT-sensitivity training.

By Stephanie Fairyngton

DECEMBER 31, 2013

SHARE  SAVED STORIES  SAVE 

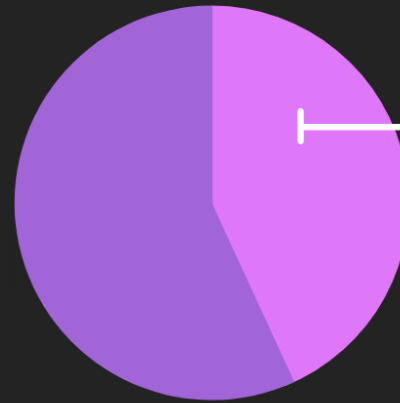
"I'm pretty sure he will not speak with you," Houser wrote in an email. He encouraged me, however, to give it a try. When my letter requesting an interview went unanswered, I called Laux's home in Dawson. "You know, you people are a pain in the ass!" he yelled, upon hearing why I was calling, and hung up.

"That's 'our Charlie!'" Houser said. "He has rationalized his role to the point where he's blameless. I'm sure it's a defense mechanism." Houser updated me on Laux's life since 1993. Just a few years after the tragedy, he was voted commissioner of Richardson County. When his term ended, he took a job as a corrections officer at the Nebraska State Penitentiary, where Lotter sits on death row. As recently as 2010, he even served on his community's Village Board. Now retired, he drives a school bus.

# Sexual Violence

Transgender and GNC (Gender Non-Conforming) people have high rates of victimization and low rates of reporting.

12% of this violence is perpetrated by other TGNC people.

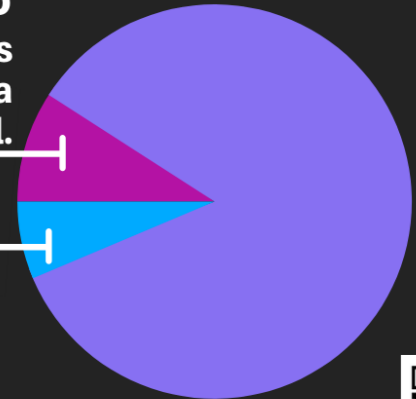


**about half**  
of the trans population  
have experienced  
sexual assault

Of those assaults:

**10%**  
were a sexual assaults  
perpetrated by a  
healthcare professional.

**7%**  
were sexual assaults  
perpetrated by law  
enforcement.



# Extracommunity

## Factors: Rejection

55% of LGBTQ youth report leaving home due to fear of mistreatment.

16% of them spent at least one night away

40% were kicked out by caregivers due to their identity

14% of them spent at least one night away


LGBTQ youth are more likely to become homeless.

44% of LGBTQ homeless youth report someone on the street asking them to trade sex for money, food or drugs.

26% of straight youth report the same.

Source: Trevor Project research summary (see QR)



The background features a vibrant, multi-colored geometric pattern. The colors include shades of blue, green, yellow, orange, red, and purple, arranged in various shapes and orientations. A dark, semi-transparent rectangular box is overlaid on the center of the image, containing white text.

In creating equitable space,  
you may be offering someone a  
kindness they have never felt before.

slido



**What is: dyadism,  
perisexism, endosexism,  
or intersexism?**

ⓘ Click **Present with Slido** or install our [Chrome extension](#) to activate this poll while presenting.

# Intersexuality: Fast Facts

- People with intersex traits identify as trans and LGBT+ at rates higher than perisex people, but may also be straight and cisgender.
- “It is estimated that up to 1.7 percent of the population has an intersex trait and that approximately 0.5 percent of people have clinically identifiable sexual or reproductive variations.” (MCASA, 2022)
- Intersex people report higher rates of financial/job discrimination, healthcare discrimination, and mistreatment by law enforcement.

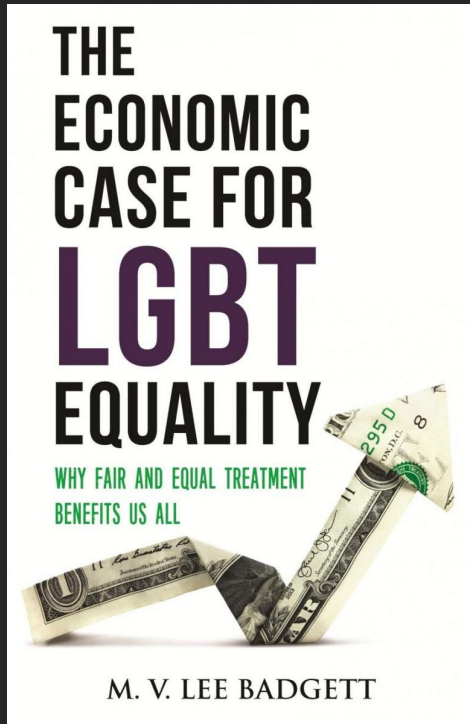


# Gender? I barely even know her:

a word on pronouns & creating space



# Social costs of homophobia and transphobia



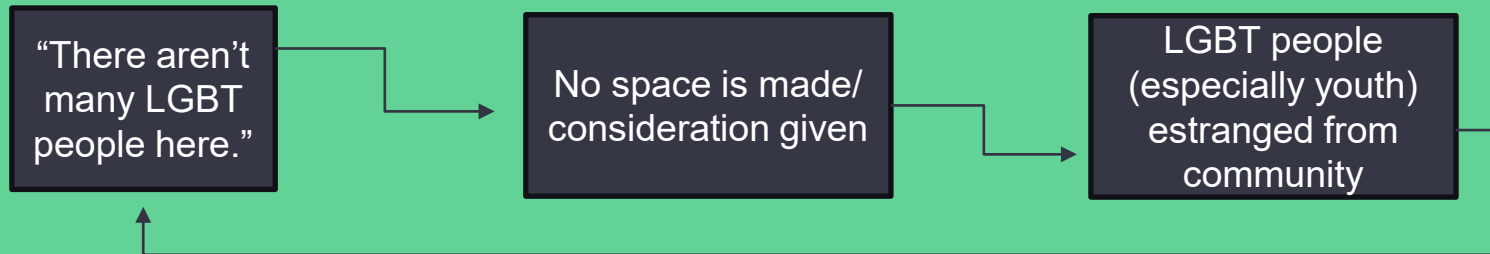
- Stigma against same -gender closeness (both physical and emotional) contributes to mental and physical strain
- Rules about gender -normative behavior are enforced, at times through violence, and belief in rigid gender roles is implicated as a risk for perpetration and victimization in intimate partner and sexual violence



## **A Longitudinal Study of Predictors of Suicide Attempts Among Lesbian, Gay, Bisexual, and Transgender Youth**

**Brian Mustanski · Richard T. Liu**

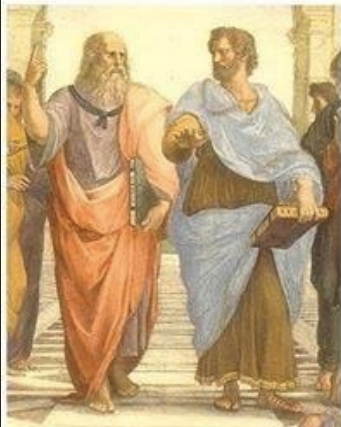
Among 237 LGBT youth (ages 16 -20) parental support in particular was linked to reduced suicidality and suicide attempts and increased reported belonging in academic environments.



Talking about gender with trans people

vs.

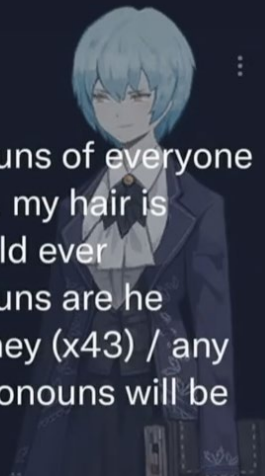
Talking about gender with cis people



✧ worm ✧

@worm\_blooded

i absorb the pronouns of everyone i defeat in combat. my hair is bluer than you could ever imagine. my pronouns are he (x81)/ she (x74)/ they (x43) / any (x12). soon your pronouns will be none/none



vang0bus [Follow](#)

gameshow called 'pride or prejudice' in which the contestants are presented with a gay joke and have to guess if it was made by a queer person or a homophobe



e-the-village-cryptid [Follow](#)

the contestants are all vaguely liberal straight people who are desperately uncomfortable with the entire concept

# Gender conformity



Traditional Hungarian  
*gatya* pants

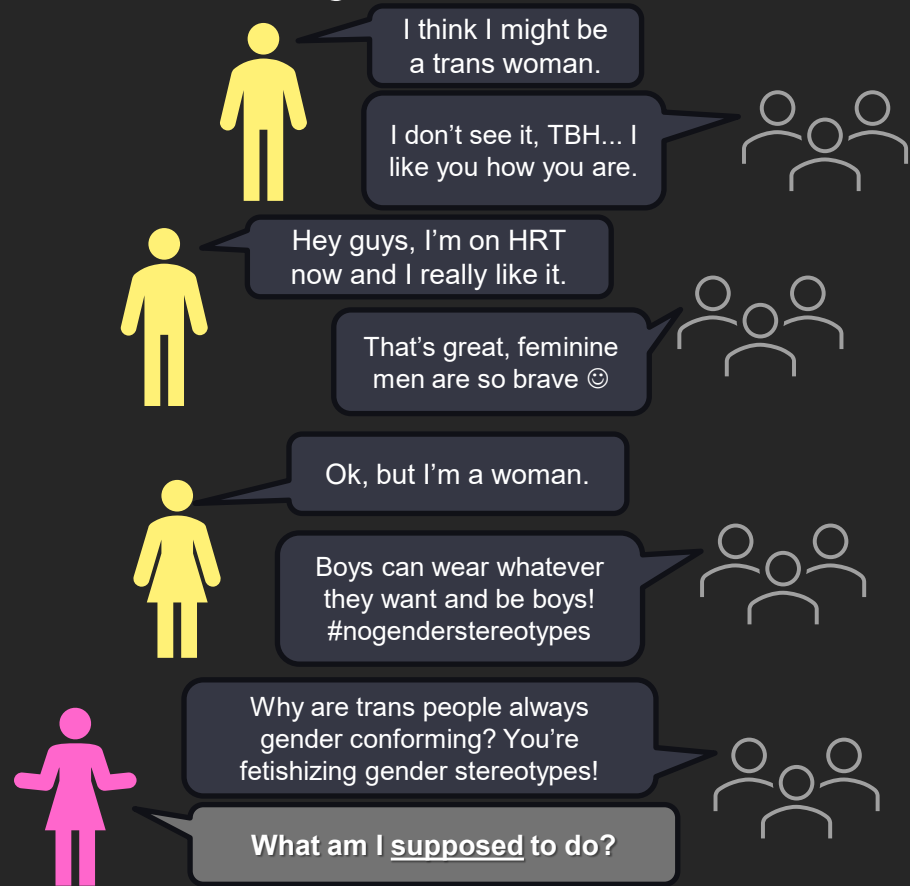
- Gender norms are constantly changing, but the ideas can still be very strict, starting pre -infancy!
- For LGBTQ clients, appearing “normative” for their perceived sex/gender may be required by obligations from doctors, workplaces, families or other social networks
- fear of being either too much or not enough like a given gender may drive homophobic/transphobic behavior.



A gender-conforming man, 1701  
(King Louis the 14<sup>th</sup> specifically)

# Gender conformity

- For trans people, there is a pressure to “prove you mean it” by conforming to gender norms. TGNC people who don’t are sometimes seen as faking, insincere, or lazy.
- The norms of gender in LGBTQ subcultures are often different from those outside of those circles.



# Intracommunity Factors

Isolation/Intracommunity bias

Economic discrimination

I'm sick of people thinking I'm a trans woman just because I'm GNC! You people make every conversation about gender. This is your fault.

This community has *always* focused on men and that's all *anybody* wants me to be. This is your fault.



Per the Williams Institute at UCLA, LA, in Virginia:

- 6% of transgender respondents are unemployed and 23% live in poverty
- 21% of LGBT people had an annual income below \$24k, compared to 16% of non-LGBT adults.
- 9% of LGBT adults reported they were unemployed, compared to 5% of non-LGBT adults.
- 46% reported unfair treatment at work & 38% reported harassment
- 57% reported the unfair treatment was motivated by religious belief
- 34% have left a job due to treatment by an employer

# Trust-building: before the door

Do your forms ask for gender or sex?

Are they options or a blank?

What information is that intended to capture?

What information is public for my LGBT/ Gender non-conforming clients?

How would homophobia/transphobia from staff be addressed?

If a marginalized patient needs referrals,  
do I know where to direct them?

## CONSISTENCY

Be consistent with use of a patient's preferred name and indicated pronouns in the situations that they request them. Ask pronouns either for **all patients**, or **no patients**- make this policy explicit and clear.

## CLARITY

Ask for clarification if you're unsure of a patient's language or preferences, and be clear with why information or a procedure is needed.

## COMPASSION

Make good use of advocates in your work if possible; and try to have alternate options for evidence collection (eg., swabbing a prosthetic vs. collecting)

**65%**

**REPUTATION**

*A clinic or agency's reputation among trans people.*

**GENDER OPTIONS ON FORMS**

*intake forms that provide more than 'male' and 'female' as options.*

**59%**

**55%**

**OUTREACH**

*Agency presence at trans community events or in materials that reach the trans community*

**REFERRAL LIST**

*Agency is present on transgender groups' lists of resources.*

**54%**

**52%**

**AGENCY NAME**

*Gendered agency names (like Women's Resource Center) can cause trans people of all identities to hesitate.*

Information from a survey of 1,005 trans and gender non-conforming people in their decisions to seek victim services.

Response percent is participants who answered a factor was "extremely" or "very" important in their decision.

-- Forge-forward.org, "Transgender individuals' knowledge of and willingness to use sexual assault programs", 2011.



**49%**

## RELATIONSHIP OPTIONS ON FORMS

*Options like 'civil union' or 'partnered' may prove important in accomodating non-heterosexual people.*

## GENDER-NEUTRAL BATHROOMS

*Sex-segregated bathrooms can be a source of discomfort or unsafety for trans people.*

**46%**

## ADVERTISEMENTS

**35%**

*Investment in LGBT+ or trans press in the form of ads also communicates investment.*

## LITERATURE

*If you have waiting room literature subscriptions, consider subscribing to a LGBT+ magazine..*

**25%**

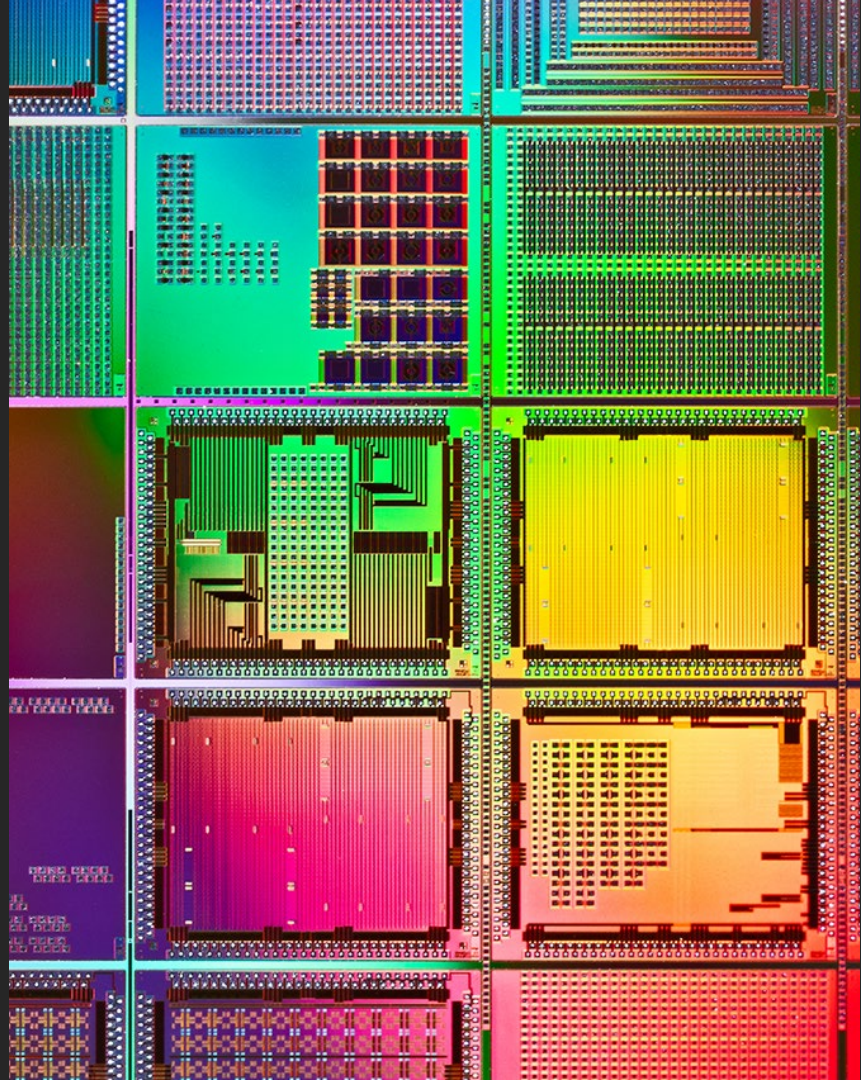
# Local Resources, local community



- Frame out your intentions and strengths - what do you have capacity for? What does your agency excel at? What tools do you have to offer? What audiences do you have pull with?
- Check with local social service or antiviolence agencies to get a handful of explicitly affirming organizations & touch base with about 3 of them.
- Start light: equity work is hard. You will get better as you go. Remain flexible, for your sake and others.
- Keep your ears and eyes open. What are fears you hear being discussed? What are needs that keep coming up?

# Online Resources

- Tend to be more general purpose: statewide, national, transnational
- Out to Protect, led by Greg Miraglia out of California, provides education and support for Law Enforcement who are looking at improving community relations
- Hotlines (like Trevor Project, the LGBT National Hotline, and the Trans Lifeline) can provide more anonymous support for victims who may have lasting emotional health needs



## Discussion, Questions & Conclusion

What are some of your major hurdles when it comes to accommodating LGBTQ+ survivors?

What is one thing you are confident you can do well in equity work?

What is something you are going to look more into?



Please  
complete our  
training  
evaluation!  
I appreciate  
it! 😊