

## Case Studies

**Kofi** - Neglect by Daughter and Son-in-Law

**Margaret** - Sexual Abuse by Nursing Aide

**Monica** - Physical Abuse by Long-Term Care Aide

**Sarah** - Psychological and Physical Abuse by Spouse

**Monte** - Financial Exploitation (theft) by Guardian/Conservator

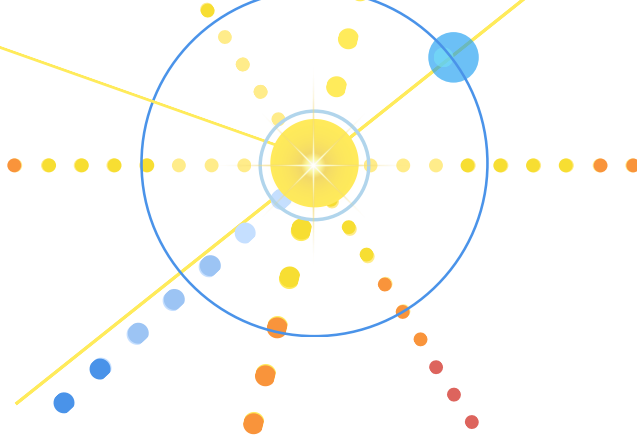
**Charlie** - Financial Exploitation (grandparent scam) by Stranger

## Discussion Questions

- Identify the form of abuse.
- How would you respond as individual and as professional? How is the response different based on role?
- What community services and resources do you think would support the person in the case study?
- What are potential barriers for the person reporting or seeking services? and how might you work through them?



This collection of real-life case studies of abuse is featured in the Victim, Family & Caregiver Resources, by the [Elder Justice Initiative](#) (2023)



## Case Study – Kofi

Kofi, 84, was diagnosed with Alzheimer’s disease and moved in with his daughter's family.

Sometimes Kofi had trouble sleeping, physical and verbal outbursts, and wandered off when he was by himself. His daughter and son-in-law were afraid that Kofi might wander out of the house and endanger himself if he was unattended. They started locking all the doors and windows when they would leave for work or errands. A neighbor noticed Kofi seemed to be stuck inside and was trying to get out of the house. She contacted the local police and Adult Protective Services (APS).

## Discussion Questions

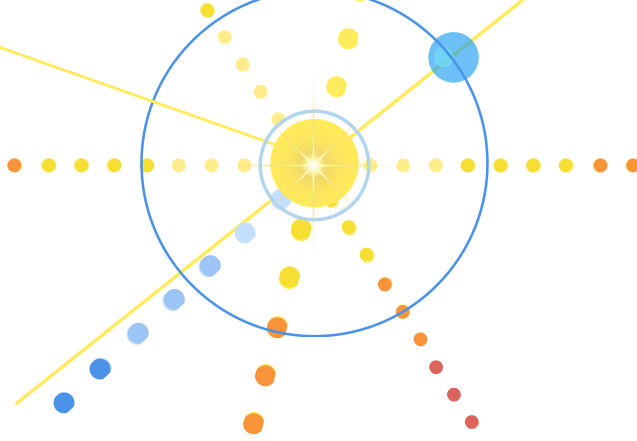
1. Identify the form of abuse.
2. How would you respond as individual and as professional? Is the response different based on role?
3. What community services and resources do you think would support Kofi?
4. What are potential barriers for the person reporting or seeking services? and how might you work through them?

### Infographics:

- Risk Factors
- Perpetrators
- Protective Factors
- Barriers to Seeking Services



This real-life case study is featured in the Victim, Family & Caregiver Resources, by the Elder Justice Initiative (2023)



## Case Study – Margaret

Margaret, 77, lived in a nursing home that was known for good residential care. One day, a nursing aide noticed that Margaret appeared anxious but Margaret would not explain why. While preparing her for a bath, the nursing aide saw multiple bruises on Margaret's arms, neck, and back, and asked what happened. Initially, Margaret did not say anything. Subsequently, the director of nursing learned from another resident that a new aide had sexually assaulted Margaret. As required by law, the director of nursing reported the sexual assault to Adult Protective Services (APS), and APS initiated an investigation, involving the Long-term Care Ombudsman, local law enforcement, and a forensic nurse at a nearby hospital.

## Discussion Questions

1. Identify the form of abuse.
2. How would you respond as individual, and as professional? Is the response different based on role?
3. What community services and resources do you think would support Margaret?
4. What are potential barriers for the person reporting or seeking services? and how might you work through them?

**Bruising:  
Accidental or  
from Abuse**

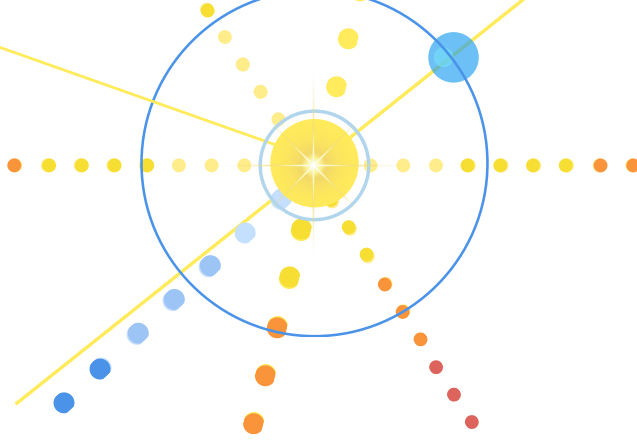


### Infographics:

- Risk Factors
- Perpetrators
- Protective Factors
- Barriers to Seeking Services



This real-life case study is featured in the Victim, Family & Caregiver Resources, by the Elder Justice Initiative (2023)



## Case Study – Monica

Monica, 79, was placed in a long term care facility when her ALS became severe and her family could no longer care for her. Her family became concerned when they saw bruising on her arms and back. Monica was not able to speak and could not tell her family how she got the bruises. Monica's family asked the staff about the bruising but was not satisfied with the explanation. The family also noticed that when a certain aide helped bathe her, Monica became upset and agitated. They suspected that the aide was hitting Monica and called local law enforcement.

## Discussion Questions

1. Identify the form of abuse.
2. How would you respond as individual, and as professional? Is the response different based on role?
3. What community services and resources do you think would support Margaret?
4. What are potential barriers for the person reporting or seeking services? and how might you work through them?

**Bruising:  
Accidental or  
from Abuse**

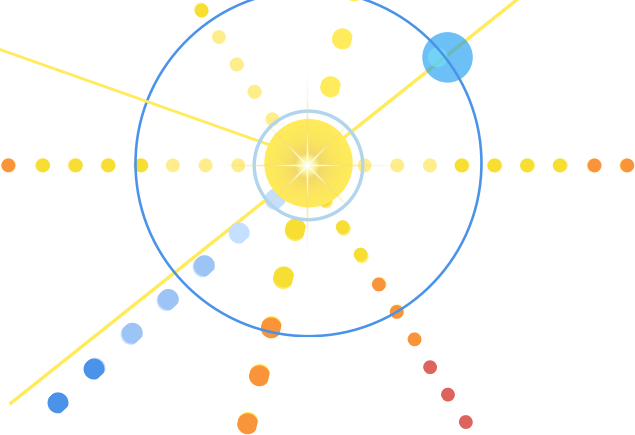


### Infographics:

- Risk Factors
- Perpetrators
- Protective Factors
- Barriers to Seeking Services



This real-life case study is featured in the Victim, Family & Caregiver Resources, by the Elder Justice Initiative (2023)



## Case Study – Sarah

Sarah, 75, had been married for over 50 years to Saul who was abusive. The abuse had a pattern. Her husband would start following her around watching her every move. Then he would make comments under his breath. Finally, he would start pointing his finger in her face and pushing her around. Since Saul's retirement, this pattern seemed to be getting worse and happening more often. Sarah picked up a pamphlet on Domestic Violence at her synagogue and decided to make her first call for help. From her conversation with the domestic violence advocate, she learned about resources in her area and steps she could take to be safe.

## Discussion Questions

1. Identify the form of abuse.
2. How would you respond as individual, and as professional? Is the response different based on role?
3. What community services and resources do you think would support Margaret?
4. What are potential barriers for the person reporting or seeking services? and how might you work through them?

### Infographics:

- Risk Factors
- Perpetrators
- Protective Factors
- Barriers to Seeking Services



This real-life case study is featured in the Victim, Family & Caregiver Resources, by the Elder Justice Initiative (2023)

## Case Study – Monte

Monte, 82, had moderate dementia and required guardianship due to his worsening disease.

Unfortunately, Monte had never given his only son, Samson, power of attorney. Monte also no longer had sufficient mental capacity to execute a power of attorney for Samson, who now lived out of state. Monte's personal assistant, John, handled all of Monte's financial transactions for him. Samson was concerned about John's access to his father's finances and reviewed Monte's account statements while visiting his father over the summer. Samson discovered that several times John had taken over \$3,000 from one of Monte's less active accounts. Samson contacted the investment firm, local law enforcement, and Adult Protective Services (APS) for help.

## Discussion Questions

1. Identify the form of abuse.
2. How would you respond as individual, and as professional? Is the response different based on role?
3. What community services and resources do you think would support Margaret?
4. What are potential barriers for the person reporting or seeking services? and how might you work through them?

### Infographics:

- Risk Factors
- Perpetrators
- Protective Factors
- Barriers to Seeking Services



This real-life case study is featured in the Victim, Family & Caregiver Resources, by the Elder Justice Initiative (2023)



## Case Study – Charlie

Charlie, 82, received a phone call from a “sheriff” in New Orleans. He said Charlie’s grandson had been arrested for intoxication. To be released, the sheriff said that someone needed to pay the grandson’s fine and that his parents were not home. The sheriff told Charlie to wire money to an online address. After the money was delivered, Charlie got a call from someone he thought was his grandson saying that he needed money to get home from New Orleans. Charlie became suspicious when he asked the person claiming to be his grandson a few personal questions that he couldn’t answer. The call ended civilly. Charlie suspected something wasn’t right and called the National Fraud Hotline. He also filed a complaint with State Attorney General’s office.

## Discussion Questions

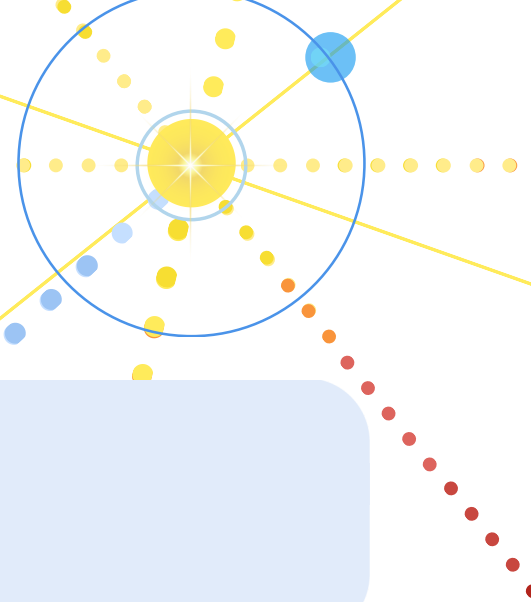
1. Identify the form of abuse.
2. How would you respond as individual, and as professional? Is the response different based on role?
3. What community services and resources do you think would support Margaret?
4. What are potential barriers for the person reporting or seeking services? and how might you work through them?

### Infographics:

- Risk Factors
- Perpetrators
- Protective Factors
- Barriers to Seeking Services



This real-life case study is featured in the Victim, Family & Caregiver Resources, by the Elder Justice Initiative (2023)



## Discussion Questions

1. Identify the form of abuse.

2. How would you respond as individual, and as professional? Is the response different based on role?

### See Infographics:

- Risk Factors
- Perpetrators
- Protective Factors
- Barriers to Seeking Services
- What APS Can and Cannot Do





## Virginia Helping Elders Access Resources

3. What community services and resources do you think would support the person  
You can use the Safety Connector on Virginia Easy Access.

4. What are potential barriers for the person reporting or seeking services? and  
how might you work through them?